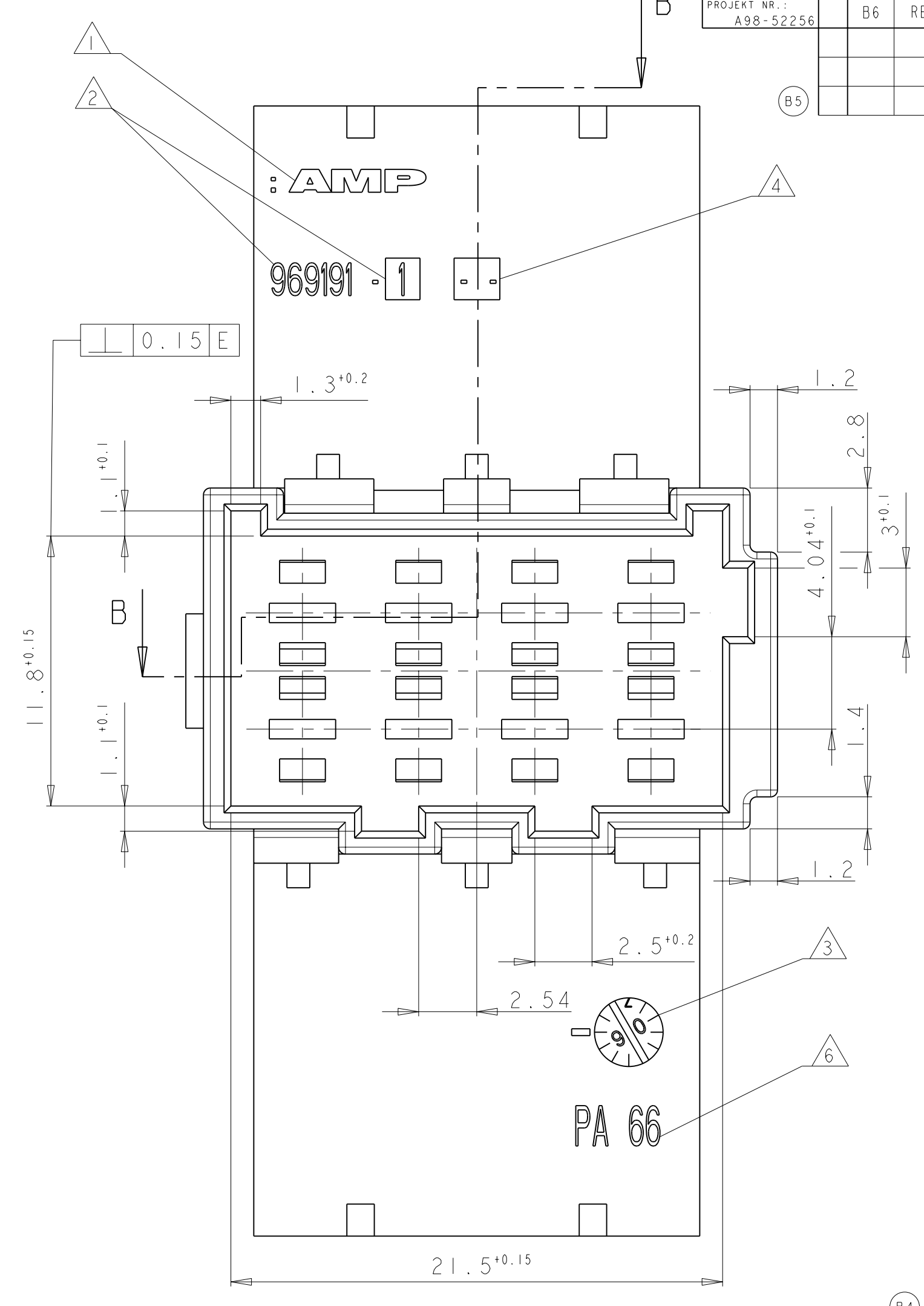
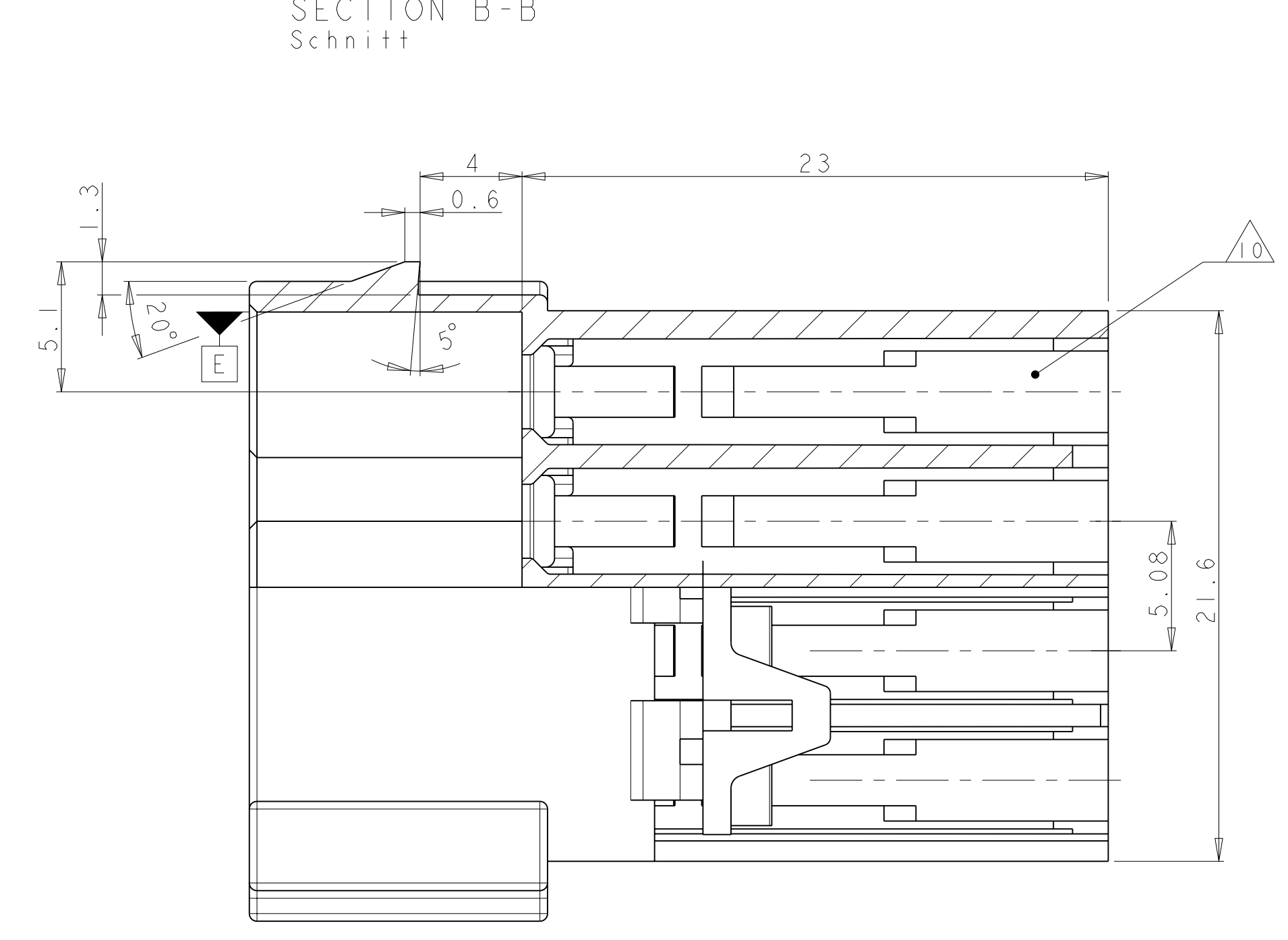
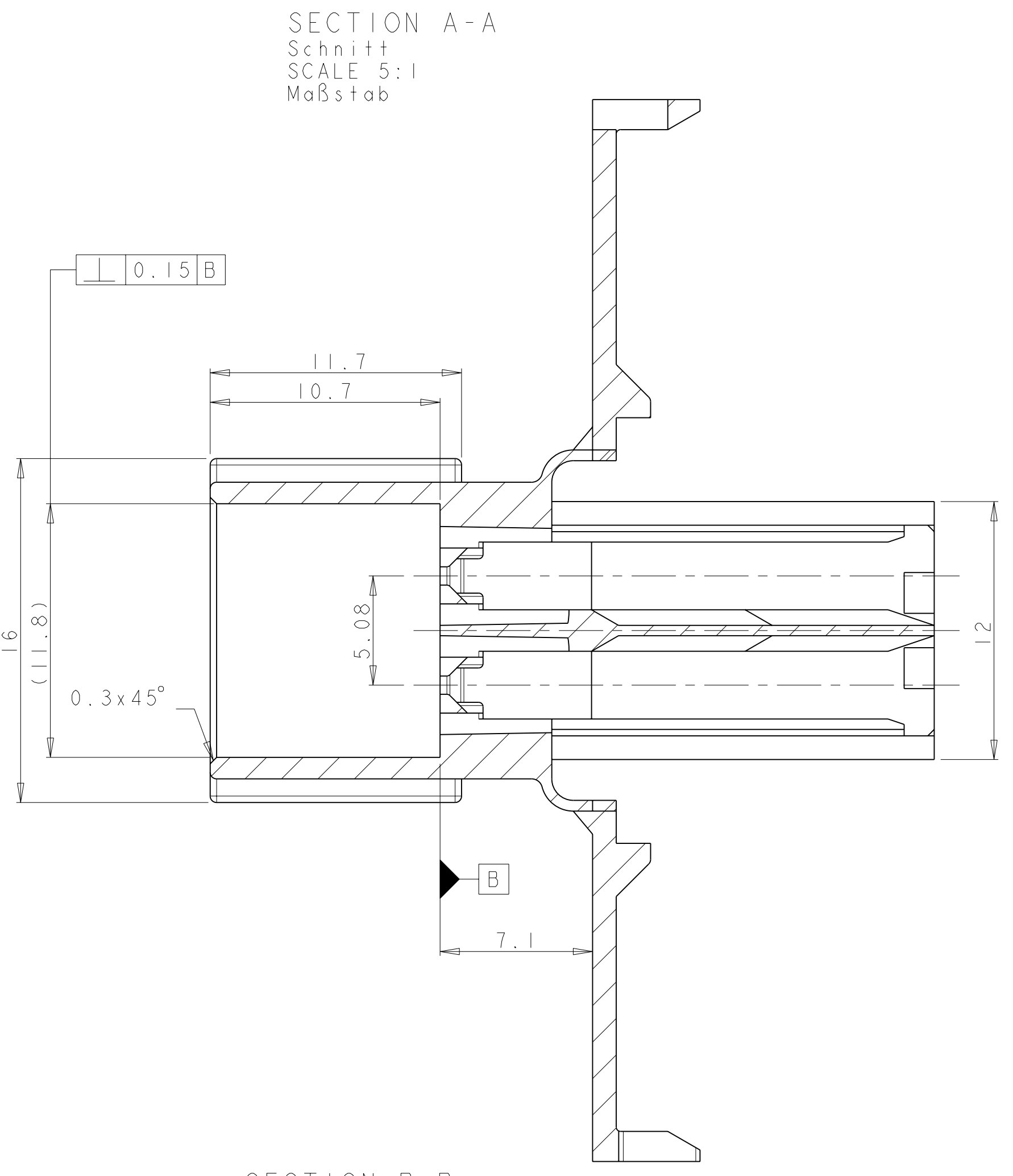
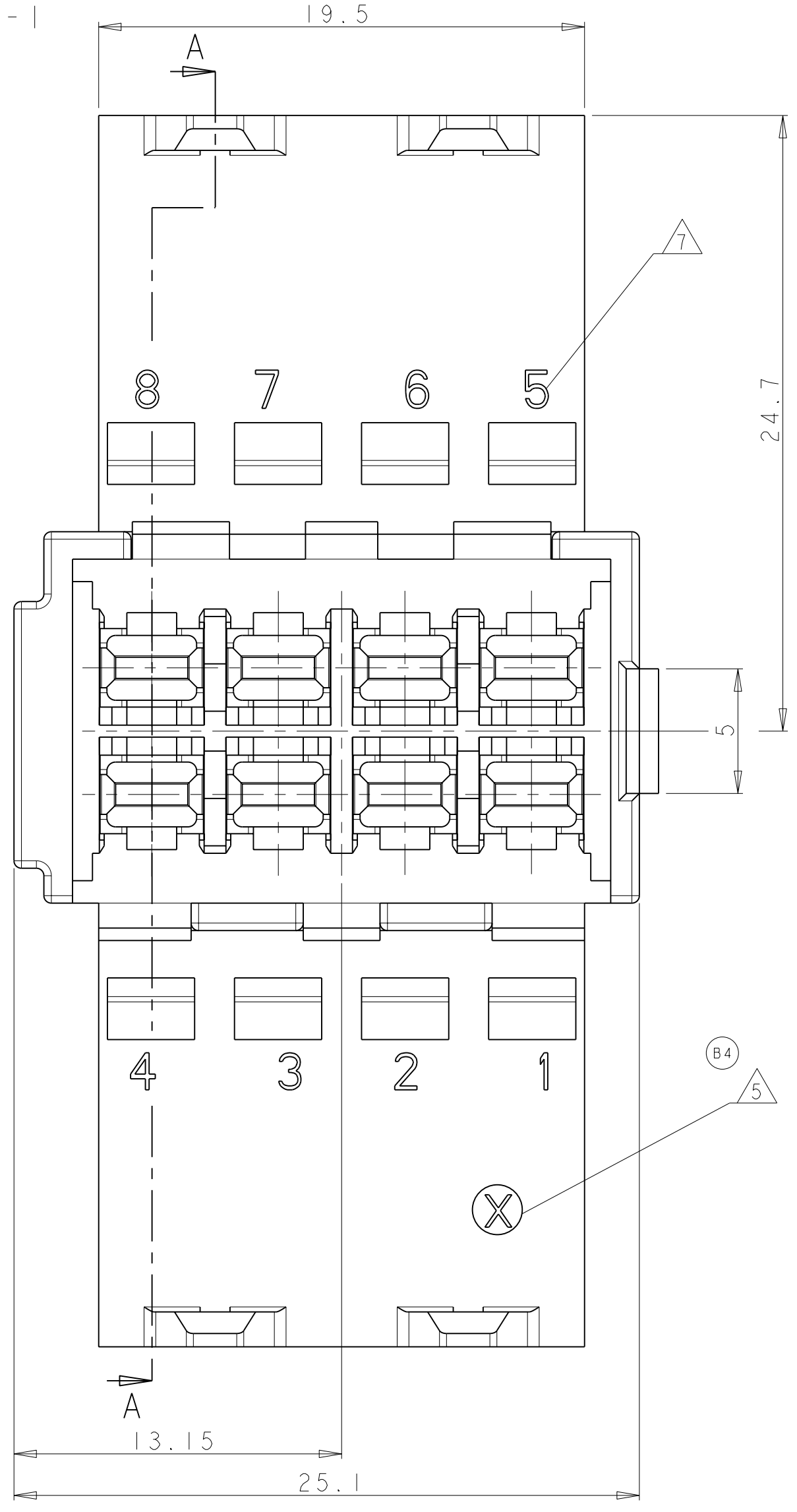


AS SHOWN 969191-1
 wie gezeichnet

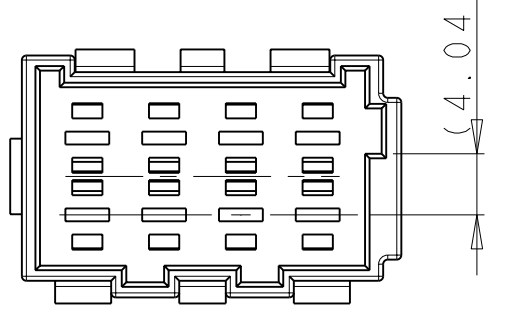
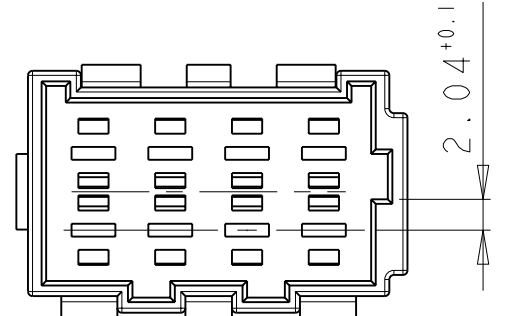
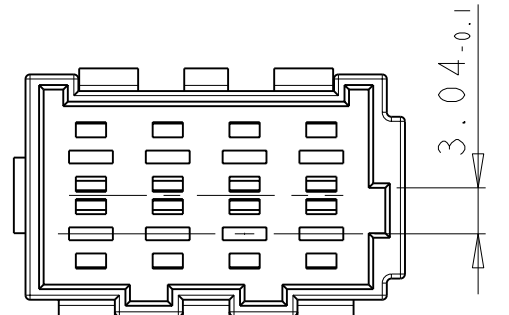
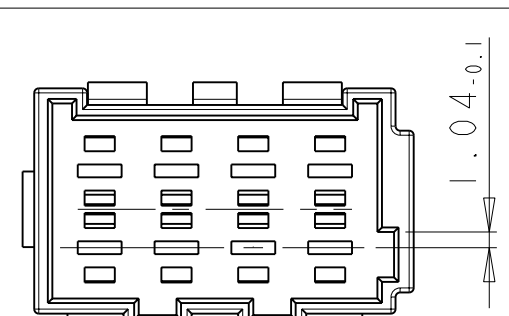


| LOC | DIST | REV | DATE | BY | CHK | APVD |
|-----|------|-----|-----------|----|-----|------|
| A1 | - | B6 | 24MAR2011 | RK | HMR | |

| REVISIONS | DESCRIPTION | DATE | BY | CHK | APVD |
|-----------|---------------------------|-----------|----|-----|------|
| B6 | REVISED PER ECO-11-005027 | 24MAR2011 | RK | HMR | |

NOTES
 Bemerkungen

- 1 AMP LOGO, SUNK
AMP Logo, vertieft
- 2 TE CONNECTIVITY PARTNUMBER WITH POSTDACH NO.
TE CONNECTIVITY Bestellnummer mit Nachstrichzahl
- 3 PRODUCTION DATE WITH DATE-CLOCK, SUNK, Ø3MM
Produktionsdatum mit Datumsuhr, versunken, Ø3mm
- 4 REVISION STATUS OF THE MOLD
Änderungszustand des Werkzeuges
- 5 ACTUAL STATUS: SEE TABLE
Aktueller Stand: siehe Tabelle
- 6 MOLD CAVITY MARKING
Nestmarkierung
- 7 MATERIAL MARKING ACCORDING TO VDA 260
Werkstoffkennzeichnung nach VDA 260
- 8 CAVITY NUMBERING
Kammerbezeichnung
- 8 MALFUNCTION CAUSED BY LACQUER IS NOT COVERED BY TE CONNECTIVITY WARRANTY
Funktionsbeeinträchtigung durch Lackieren liegt nicht im Einfluss und Gewährleistungsumfang von Tyco
- 9 PACKAGING: TWO HEAT-SEALED PLASTIC BAGS IN ONE CARTON
Verpackung: Zwei verschweißte Plastikbeutel in einem Karton
- 10 SUITABLE CONTACTS SEE PRODUCT GROUP DRAWING 1355052
Passende Kontakte siehe Produkt-Gruppenzeichnung 1355052
- 11 MAX. WIRE SIZE 2,5 mm²
Max. Kabelquerschnitt 2,5 mm²
- 12 PARTS ARE CONDITIONED
Teile werden konditioniert

| 927365-1 | A | NATURE natur | 969191-1 | B | 4.5g |  |
|--------------------------|---------------------|---|-------------------------|----------|-------------------|---|
| 927366-1 | B | YELLOW gelb (SIMILAR TO ähnlich RAL 1021) | 969191-2 | B | 4.5g |  |
| 927367-1 | C | RED rot (SIMILAR TO ähnlich RAL 3000) | 969191-3 | B | 4.5g |  |
| 927368-1 | D | BROWN braun (SIMILAR TO ähnlich RAL 8004) | 969191-4 | B | 4.5g |  |
| MATED WITH passend zu | CODING Kodierung | COLOUR Farbe | PART NO. Bestell-Nr. | REVISION | WEIGHT gewicht | CODING/Kodierung SCALE/M 2:1 |

THIS DRAWING IS A CONTROLLED DOCUMENT.

DMN: O. SCHUCHT 17NOV98
 CHK: J. HASS

DIMENSIONS: MASSEINHEITEN: mm
 TOLERANCES UNLESS OTHERWISE SPECIFIED: mm
 1. PLC ±0.1
 2. PLC ±0.1
 3. PLC ±0.1
 4. ANGLES/WINKEL ±0.1
 5. FINISH/OBERFLÄCHE/FARBE SEE TABLE

MATERIAL: PA 66

PRODUCT SPEC: 108-18063
 APPLICATION SPEC: 114-18051
 WEIGHT: 4.5g

DMN: O. SCHUCHT 17NOV98
 CHK: J. HASS
 NAME: TAB HOUSING 2,8 x 0.8mm, 8 POS.
 PRODUCT SPEC: 108-18063
 APPLICATION SPEC: 114-18051
 WEIGHT: 4.5g

SCALE: 5:1
 SHEET: 1 OF 1
 REV: B6