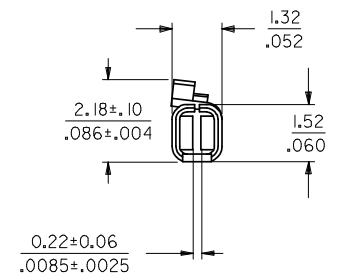
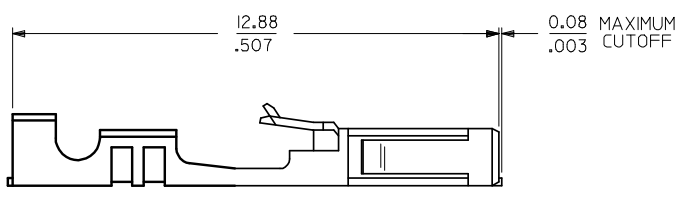
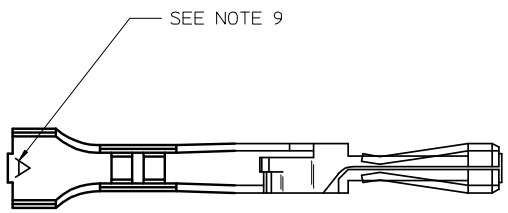


ITEM NUMBER	FINISH	NOTES
70058-0096	POST-PLATE	ALL EDGES COVERED BY PLATING EXCEPT FOR CUT-OFFS OF THE CARRIERS.
70058-4096	PRE-PLATE	ALL CUT EDGES WILL BE EXPOSED AND WILL NOT HAVE PLATING.



- NOTES:
1. TERMINAL MATERIAL: PHOSPHOR BRONZE.
 2. FINISH: POST-PLATE: 3.81 MICROMETERS/150 MICROINCHES MINIMUM TIN (Sn) IN CONTACT AREA, 1.91 MICROMETERS/75 MICROINCHES MINIMUM TIN (Sn) IN CRIMP AREA, NICKEL UNDERPLATE OVERALL.
PRE-PLATE: 3.81 MICROMETERS/150 MICROINCHES MINIMUM TIN (Sn) OVER NICKEL UNDERPLATE OVERALL.
 3. TERMINAL TO BE USED IN HOUSING 70066-**** AND 70450-****.
 4. REFER TO PRODUCT SPECIFICATION PS-70058.
 5. REFER TO MOLEX OPERATIONS AND SERVICE MANUAL FOR CRIMP DETAILS.
 6. TERMINAL TO BE USED WITH 0.64/.025 SQUARE PINS.
 7. TERMINAL TO BE USED WITH 24-30 AWG STRANDED WIRE WITH 1.52/.060 MAXIMUM DIAMETER INSULATION.
 8. TERMINALS SUPPLIED LOOSE PER DRAWING PK-70873-0822.
 9. CRIMP SIZE INDICATOR A=24-30 AWG.

INITIAL RELEASE EC NO: UCP2008-1091 DRWN:DMORGAN 2008/07/01 CHK:DMSTBARRA 2008/07/01 APPR:SMILLER 2008/07/02	QUALITY SYMBOLS ▽=0 ▽=0	GENERAL TOLERANCES (UNLESS SPECIFIED)		DIMENSION STYLE MM/IN	SCALE	DESIGN UNITS INCH	THIRD ANGLE PROJECTION
		4 PLACES ± --- ± --- 3 PLACES ± --- ± .005 2 PLACES ± 0.13 ± .010 1 PLACE ± 0.25 ± ---	DRAWN BY DATE DMORGAN 2007/11/12 CHECKED BY DATE MSIBARRA 2007/11/12 APPROVED BY DATE SMILLER 2007/11/12	TITLE TERMINAL - BOX/CRIMP TIN PLATED FOR 24-30 AWG STRANDED WIRE PKG LOOSE			
A	DRAFT WHERE APPLICABLE MUST REMAIN WITHIN DIMENSIONS	MATERIAL NO. SEE CHART		MOLEX INCORPORATED		DOCUMENT NO. SD-70058-096	
		SIZE C		THIS DRAWING CONTAINS INFORMATION THAT IS PROPRIETARY TO MOLEX INCORPORATED AND SHOULD NOT BE USED WITHOUT WRITTEN PERMISSION			