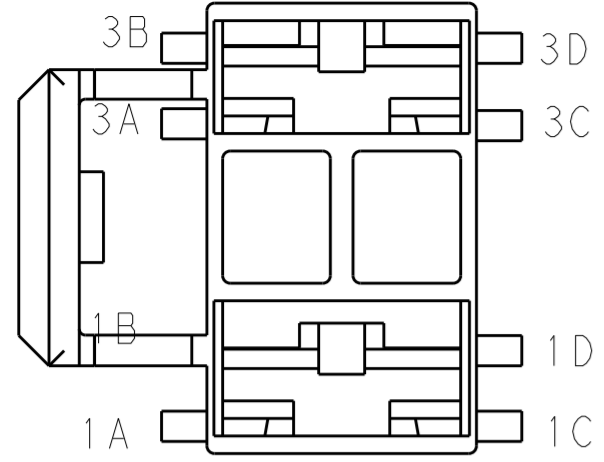


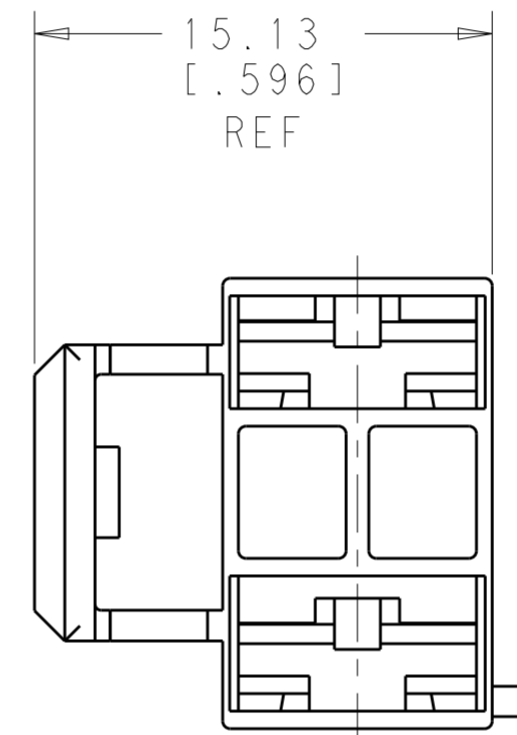
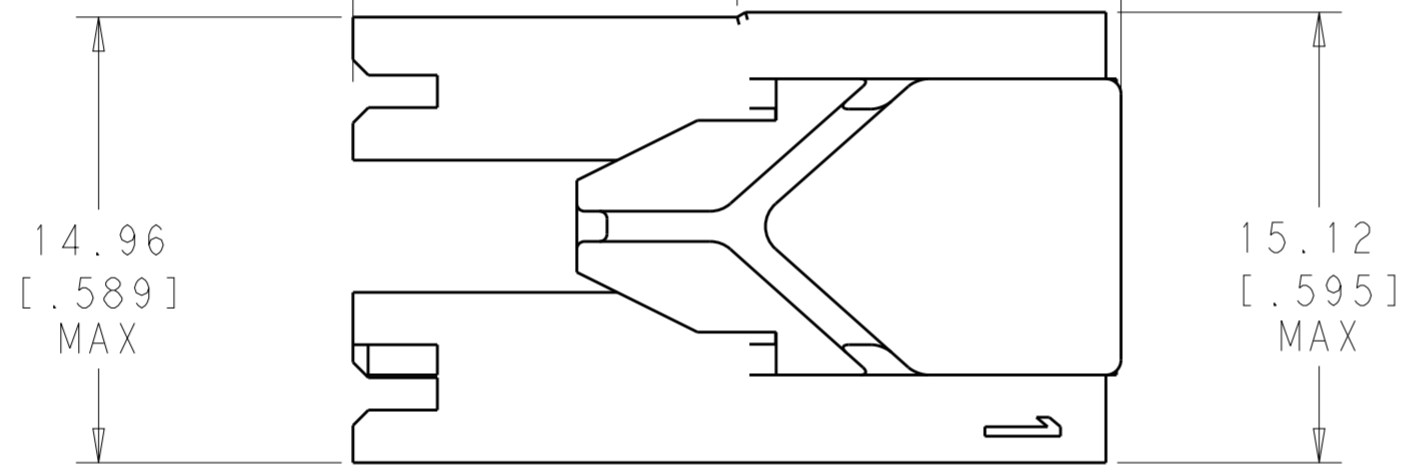
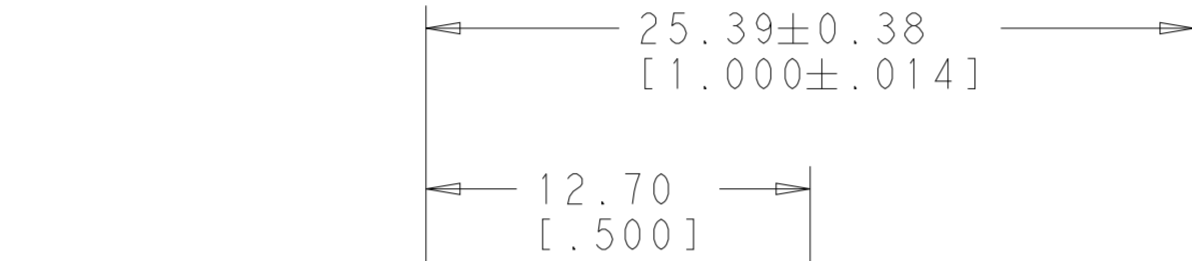
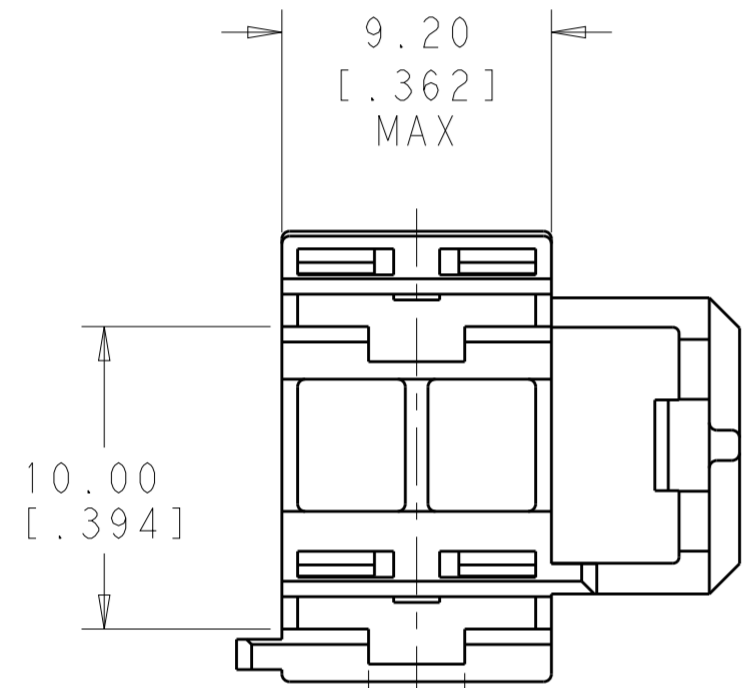
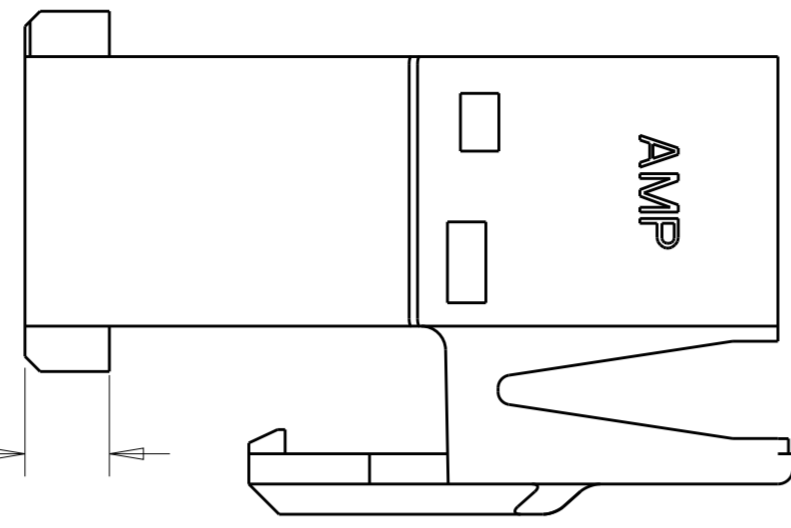
THIS DRAWING IS UNPUBLISHED. RELEASED FOR PUBLICATION 2012  
 © COPYRIGHT 2012 BY TE CONNECTIVITY ALL RIGHTS RESERVED.

REVISIONS						
LOC	DIST	P	LTR	DESCRIPTION	DATE	APVD
-	-	C		REVISED PER ECR-17-002628	14MAR2017	JK
		D		REVISED PER ECR-18-004971	17APR2018	MD



SPECIAL REAR VIEW THAT MATES WITH THE HEADER VIEWS BELOW SHOWING THE KEYING & POLARIZATION

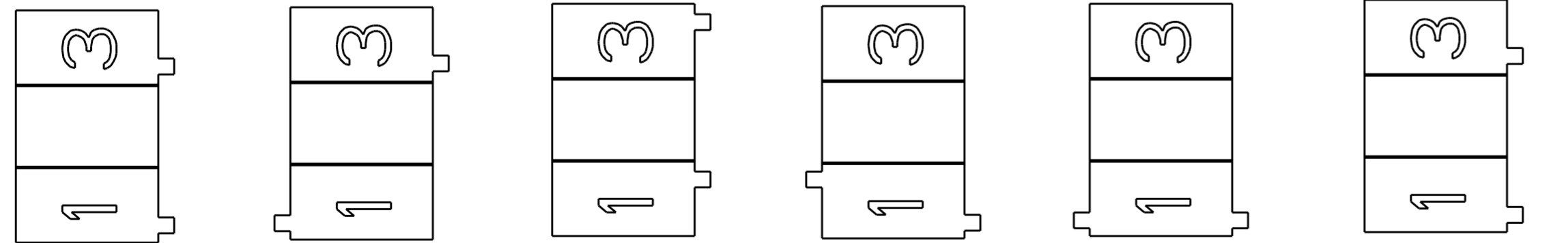
2.79  
[.110]



3.18 ± 0.38  
[.125 ± .014]

- 1 ACCORDING TO IEC 60335-1, GWPT 750°C WITHOUT FLAME
- 2 PRELIMINARY - NOT FOR PRODUCTION
- 3 DELETED NOTE
- 4 DELETED NOTE
- 5 ACCEPTS RECEPTACLES 2238135, 2238136, 1217378, 1217094 AND 1217095

1	1C, 3C	NONE	GRAY	5-1969536-6
1	1C	1A	BLUE	5-1969536-5
1	1C	1B	BLACK	5-1969536-4
1	1D, 3D	NONE	NATURAL	5-1969536-3
1	3C	1A	YELLOW	5-1969536-2
1	1C, 3C	NONE	GREEN	5-1969536-1
	1C, 3C	NONE	GRAY	1969536-6
	1C	1A	BLUE	1969536-5
	1C	1B	BLACK	1969536-4
	1D, 3D	NONE	NATURAL	1969536-3
	3C	1A	YELLOW	1969536-2
	1C, 3C	NONE	GREEN	1969536-1
	KEYING FEATURE	POLARIZATION FEATURE	COLOR	PART NUMBER



1969536-1 1969536-2 1969536-3 1969536-4 1969536-5 1969536-6  
 5-1969536-1 5-1969536-2 5-1969536-3 5-1969536-4 5-1969536-5 5-1969536-6

HEADER VIEWS

THIS DRAWING IS A CONTROLLED DOCUMENT. DWN: JR RUTH 19JUN2012  
 CHK: F LUPO 15MAR2017  
 APVD: R ROBONE 15MAR2017

**STE** TE Connectivity

NAME: HOUSING, RECEPT, POSI-LOCK MK III, 6.35 [.250] SERIES, 3 POSITION, 2 CIRCUIT

SIZE: A2 CAGE CODE: 00779 DRAWING NO: C-1969536 RESTRICTED TO: -

MATERIAL: NYLON TOLERANCES UNLESS OTHERWISE SPECIFIED: SEE TABLE

0 PLC ±  
 1 PLC ±  
 2 PLC ±0.25 [.010]  
 3 PLC ±  
 4 PLC ±  
 ANGLES ±  
 FINISH ±

Customer Drawing SCALE: 4:1 SHEET 1 OF 1 REV D